

# The Economic Impact of the Louisiana State University Equine Health and Sports Performance Center of Excellence



**LSU** | E. J. Ourso College of Business

**Center for Economics, Business, and Policy Research**

Dek Terrell, PhD | Alexander Fuller | Jacob Thornton



# Foreword

---

The LSU School of Veterinary Medicine is envisioning one of the most ambitious projects in its history: the LSU Vet Med Equine Health and Sports Performance Center of Excellence. This facility will be home to the preeminent equine healthcare and research facility in the region, combining superior clinical practice, expert translational research, and world-class teaching into one modern facility located directly on the LSU Vet Med campus and in the very heart of horse country in Louisiana.

The vision for this center is necessary for Louisiana. There are approximately 57 equine veterinarians in the state today. In 10 years, trends indicate there will be fewer than 40 equine veterinarians to service 120,000 horses throughout Louisiana. Fewer all-service clinics in the state will result, due to fewer clinical practitioners and the extremely high cost of equipment needed to provide advanced equine healthcare.

These trends, along with fewer veterinary students focusing on equine and rural farm animal practices, puts LSU Vet Med in a unique position. By 2034, LSU Vet Med may be the sole comprehensive medical, surgical, rehabilitation, and sports medicine facility for horses in Louisiana. Other states are already addressing these trends. North Carolina is funding a \$70 million large animal center at North Carolina State University. Colorado is funding a \$230 million Veterinary Health and Education Complex at Colorado State University, one of three equine facilities at the school. Texas A&M, University of Georgia, Ohio State University and University of Florida have also built or renovated equine facilities, with investment ranging from \$30-\$70 million in the last decade.

Our mission is to keep the equine industry in Louisiana healthy for many years to come. Our goal is to have this new facility built and operational by 2029.

The center will feature large intake and administrative areas, a client lounge, rounds rooms, spacious exam rooms, large operating rooms, and nurses' stations. A separate radiology ward with a positron emission tomography (PET) scan, standing computed tomography (CT) machine, ultrasound, and nuclear scintigraphy will greatly enhance our diagnostic capabilities for the most complex cases. Adjacent to the medical facility will be an enclosed area dedicated to sports medicine rehabilitation, a crucial area of growth in equine medicine and ideally suited to service Louisiana's large number of thoroughbreds, quarter horses, and performance horses. This complex will house the farrier unit, lameness pavilion, equine hydrotherapy pool, and pavilion for sports rehabilitation.

This economic impact report will demonstrate the financial benefit of building a state-of-the-art equine healthcare and research facility to serve and protect Louisiana's horse economy, including the racing industry's substantial tax revenue contributions. Further, over 57 show facilities and over 60 different horse associations across Louisiana bring a multitude of horses into the state from across the country for shows and competitions. Louisiana is, and needs to remain, horse country.

LSU Vet Med is on an upward trajectory, ready to meet the needs of Louisiana on multiple levels – teaching, healing, discovering, and protecting. Our vision for a new Equine Health and Sports Performance Center of Excellence is a bold step forward to secure our position as a premier equine healthcare and research provider and to protect Louisiana's \$2 billion horse economy.

## **Oliver Garden**

*Dean and Kenneth F. Burns Endowed Chair in Veterinary Medicine*

# Executive Summary

---

- ▶ Guidry and Blanchard’s LSU AgSummary estimated an inventory of 71,317 horses residing in the state of Louisiana as of 2020. This figure does not include horses that board in the state for extended periods of time during peak horse racing season nor does it include the 811 foals born in 2021, or foals born since. This number does not include horses that are in the state for periods of time for recreational purposes, shows, and rodeo competitions..
- ▶ Including these horses, the total population of horses in Louisiana may reach up to 120,000.
- ▶ In Louisiana there are over 57 show facilities that show horses throughout the year and 62 professional associations for the recreational and show horse category. (Louisiana Horse Tourism – [www.louisianahorsetourism.com](http://www.louisianahorsetourism.com))
- ▶ As of 2020, the LSU AgCenter estimated the value of the Louisiana horses at \$278.4 million. The most recent economic impact study of the Louisiana horse industry from the American Horse Council estimated the industry had a \$2.5 billion impact on Louisiana’s 2005 GDP.
- ▶ These horses generate significant economic impact in various forms. One major form is tax revenue made from slots and horse betting at the four racetracks in Louisiana. In FY 2022-2023, slot revenue was \$48.7 million.
- ▶ Significant infrastructure, especially in the form of veterinary care, is required to support the horses. One such example is the current LSU Equine Health Sports Performance (EHSP) program. These facilities generate economic impact for Louisiana.
- ▶ In FY 2023, EHSP generated a total economic output of \$3.6 million and supported about \$1.86 million in total earnings and 37 jobs.
- ▶ EHSP plans to undergo an expansion (opening in FY 2029) that would include a standing CT machine and other improvements that would lead to an estimated 20% increase in horses seen in the first year of operation.
- ▶ The projected economic impact of constructing the center:
  - ▶ \$88.4 million in total economic impact
  - ▶ \$36.2 million in earnings
  - ▶ 598 jobs

# 1 | Introduction

---

The horse industry plays an important role in Louisiana in terms of recreation, show horses, and a long history of horse racing. The LSU School of Veterinary Medicine and EHSP play a crucial role of providing care to tens of thousands of Louisiana's horses to date.

This study evaluates a proposal to expand the EHSP Center of Excellence by adding the space and equipment required to serve as a major university center for equine care. Given the national trend of relying on university research centers for equine diagnostics and complex surgeries, it is crucial that the EHSP expand to establish LSU as a leader in service to the Louisiana horse industry.

This study consists of four parts: Section 1, an Introduction; Section 2, which contains a brief discussion of Louisiana's horse industry, its size, and the future of equine medicine that services the industry in Louisiana; Section 3, which details EHSP Center of Excellence proposed facility; and Section 4, which focuses on the economic impact and viability of the proposed center expansion.



## 2 | Louisiana Horse Industry

### 2.1 Historical Background

Louisiana has a well-established horse industry generating significant economic impact in the state. The most recent comprehensive study of the economic impact of the Louisiana horse industry was conducted by the American Horse Council. That study estimated that the horse industry in Louisiana had an economic impact of \$2.5 billion. The 2023 American Horse Council study is currently underway, and an updated figure is expected soon. A 2016 study conducted by Dr. Dek Terrell on the impact of Horse Racing in Louisiana determined that horse racing and its facilities alone generated \$1.05 billion in combined direct and indirect economic impact. It is important to emphasize that this figure only accounted for horse racing and not the entire horse industry.

### 2.2 Current State

The horses that make up the Louisiana horse industry can be broken into three categories: racehorses, recreational horses, and show horses. As of 2020, Guidry and Blanchard's Louisiana Summary estimated there were 10,719 racehorses, 47,212 recreational horses, and 13,386 show horses deemed to be full-time Louisiana horses. This total was 71,317 horses in Louisiana as of 2021. This number does not account for out-of-state horses that travel to Louisiana for peak racing season. These horses are boarded in Louisiana for extended periods of time and generate significant economic impact. There are additional foals born in Louisiana each year. In 2021 the registered thoroughbred foal count was 811. When you add in the unregistered thoroughbreds, and the recreational and show categories which outnumber thoroughbreds you have an even greater number of foals each year.

### Estimated Louisiana Horse Inventory

Type	Count	Percent of Total
Race	10,719	15.03%
Recreational	47,212	66.20%
Show	13,386	18.77%
Total	71,317	100.00%

Source: Guidry and Blanchard (2021)

A value can be assigned to these 71,317 Louisiana horses in a similar breakdown. In total, the value of horses as of 2021 is \$278.4 million. Of this total, racehorses account for \$107.2 million while recreational horses and show horses make up the other \$70.8 million and \$100.4 million, respectively. In addition, the Louisiana Jockey Club states the thoroughbred weanlings, yearlings and 2 year olds have been consistently selling for the same or more sales prices compared to previous years. This is another indicator of the overall health of the equine industry in Louisiana.

## Estimated Louisiana Horse Value

Type	Value	Percent of Total
Race	\$107,190,000	38.50%
Recreational	\$70,818,000	25.44%
Show	\$100,395,000	36.06%
Total	\$278,403,000	100.00%

Source: Guidry and Blanchard (2021)

Despite making up the smallest number of horses, racehorses are the most valuable. Racehorses also create substantial impact due to the activities that occur at the racetracks.

There are four racetracks in Louisiana: Delta Downs, Louisiana Downs, Evangeline Downs, and Fair Grounds. Here, patrons can place bets on horse racing, as well as play slots. Transactions related to the horse industry generate significant tax dollars for the State of Louisiana. In FY 2022-2023, the state of Louisiana saw \$48.7 million in tax revenue from slots at the racetracks alone.

Race Track	State Tax Due
Delta Downs	\$25,294,727
Louisiana Downs	\$5,916,787
Evangeline Downs	\$10,967,171
Fair Grounds	\$6,509,926
Total	\$48,688,611

Even with a modest decline in number of Louisiana horses following a peak in 2007 when slots were added at the Fair Grounds racing facility, the demand for equine services at LSU Vet Med has never been greater. Options available to treat equine illnesses and injuries have expanded over time. Wealth has increased and more people have been able to take advantage of these treatments. Liran, Finkelstein, and Gupta (2017) provide an interesting comparison of spending trends in veterinary healthcare and human healthcare. Economists have often debated whether health expenditures have risen faster than incomes due to health insurance or whether people have simply decided to spend a greater proportion of their income on healthcare as incomes have risen over time.

Liran, Finkelstein, and Gupta (2017) study pet health care because most expenditures on pets are not covered by insurance. They discover the same pattern for pet healthcare as human healthcare, stating, "Rising U.S. healthcare spending is an optimal outcome given individual preferences." Simply stated, as the U.S. population gets wealthier, more resources are available to care for animals.

Given the complexities of equine care, LSU Vet Med needs to prepare to perform an increasingly important role in equine care. To measure the demand for their services, LSU Vet Med conducted informal interviews with equine veterinarians around the state to determine plans for the future. In Figure 1, the number located in each parish represents the number of equine veterinarians in that parish. The black horse with rider logos represent the four horse tracks located in Louisiana, and the purple circle with LSU insignia represents the LSU Vet Med facility. In Figure 2, the black horse with rider logos and the purple circle with LSU insignia continue to represent the four horse tracks and the LSU Vet Med facility. The numbers in each parish represent the projected number of equine veterinarians that will be practicing in those parishes in 2034.

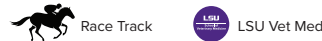
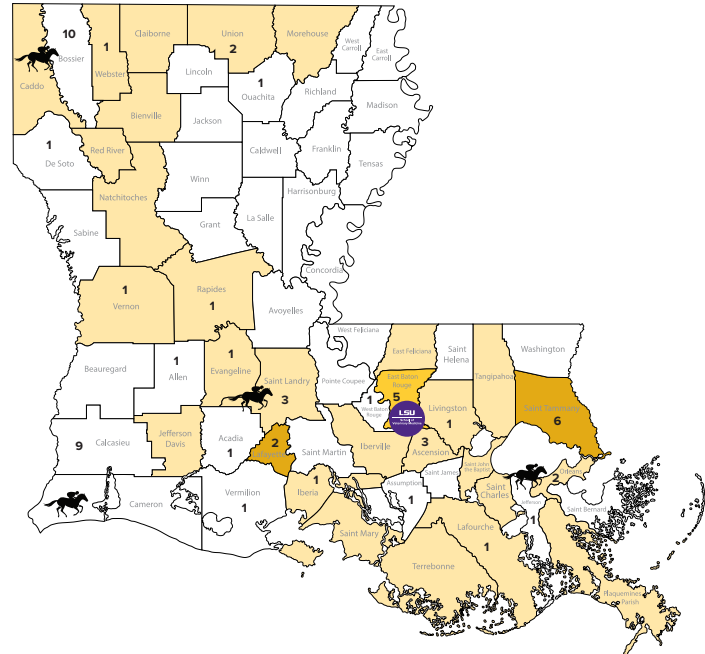
**Figure 1: Current Louisiana Equine Veterinarians**

**Number of Equine Veterinarians by Parish (2023)**

Acadia – 1	Lafourche – 1
Allen – 1	Livingston – 1
Ascension – 3	Orleans – 2
Assumption – 1	Ouachita – 1
Bossier – 10	Rapides – 1
Calcasieu – 9	St. Landry – 3
Desoto – 1	St. Tammany – 6
East Baton Rouge – 5	Union – 2
Evangeline – 1	Evangeline – 1
Iberia – 1	Vermillion – 1
Jefferson – 1	Webster – 1
Lafayette – 2	West Baton Rouge – 2

Total Equine Veterinarians – 57

\*LSU Vet Med Faculty are not included.



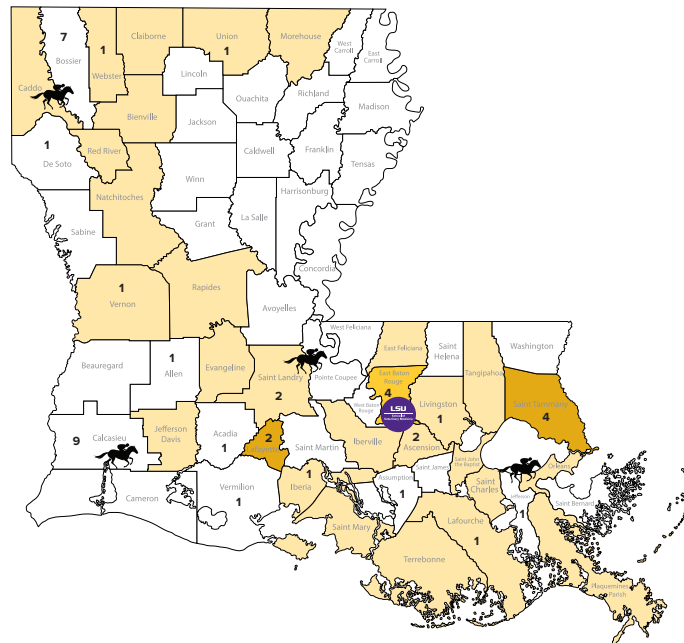
**Figure 2: Projected 2034 Louisiana Equine Veterinarians**

**Projected Number of Equine Veterinarians by Parish (2034)**

Acadia – 1	Jefferson – 1
Allen – 1	Lafayette – 2
Ascension – 2	Lafourche – 1
Assumption – 1	Livingston – 1
Bossier – 7	St. Landry – 2
Calcasieu – 8	St. Tammany – 4
Desoto – 1	Union – 2
East Baton Rouge – 4	Vernon – 1
Evangeline – 1	Webster – 1
Iberia – 1	

Total Projected Equine Veterinarians – 41\*

\*LSU Vet Med Faculty are not included.



Simply looking at the number of equine veterinarians in Louisiana understates the future demand for equine care provided by LSU Vet Med. Given the complexities of equine surgery, some local vets are already moving away from performing surgeries and are referring horses to LSU Vet Med for those procedures. With better facilities and equipment, the level of care offered at the LSU EHSP Center of Excellence will attract a larger share of the complex diagnostic and surgical procedures provided in modern equine care.



# 3 | Equine Health and Sports Performance Center of Excellence

---

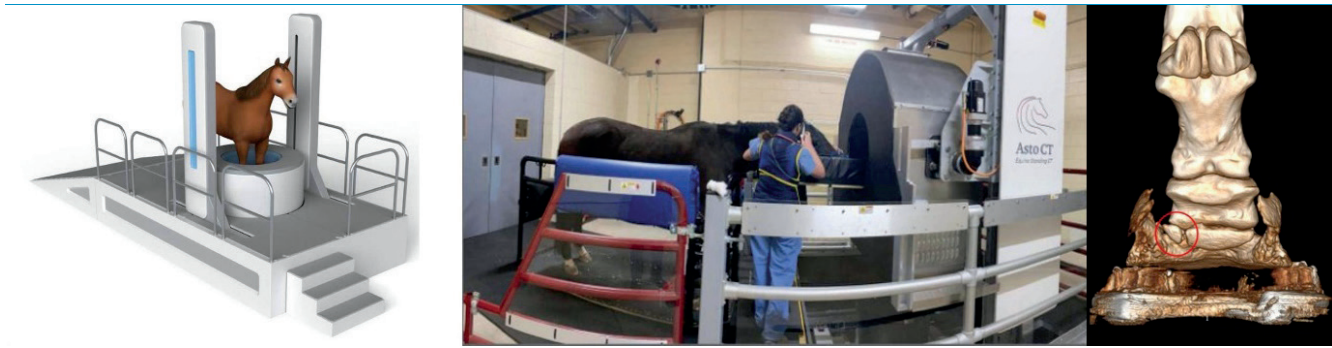
## 3.1: Equine Health and Sports Performance Center of Excellence

LSU Vet Med's current Equine Health and Sports Performance (EHSP) program is the premier equine medical facility in the southeastern region of the United States. The current program provides excellent care to the horse population of Louisiana and beyond with the help of many veterinarians, technicians, and caretakers. The current program has plans to expand its existing operation and become the Equine Health and Sports Performance Center of Excellence. The current EHSP plans to break ground on this project in 2027 or 2028 and to be fully operational by FY 2029. This new center will feature a state-of-the-art facility that is home to a new standing computed tomography (CT) machine and additional equine surgical bays. The new center will have the capacity to take on a much larger caseload and make a larger impact on Louisiana's economy.

## 3.2: Features of the EHSP Center of Excellence

The EHSP Center of Excellence will feature a new standing CT machine and positron emission tomography (PET) scanner. The standing CT machine will allow for 3-dimensional imaging of the distal limb (hoof to carpus or hock) as well as the head and neck of horses without the need for general anesthesia. Installation of a PET scanner will also improve the early diagnosis of bone and soft tissue injuries of the distal limb of horses. PET images can be overlaid on CT or radiographic images to better identify the location of early disease. This will be one of only a few PET scanners for horses in the country. According to a study conducted by the British Equine Veterinary Association, with the use of a standing CT machine, veterinarians were able to achieve a 97% efficiency rate in imaging injuries and abnormalities in horse limbs without the need to anesthetize the horses. Recent studies show that these imaging modalities have tremendous health benefits to horses, especially racehorses, as they can better detect subtle and early injuries, such as stress fractures in racehorses' limbs before an eventual breakdown occurs.

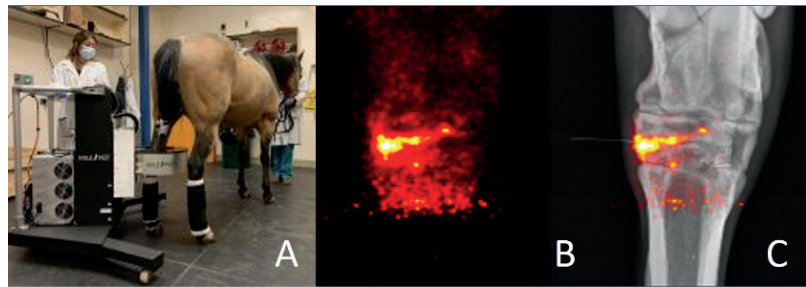
New facilities will allow for the growth of the Sports Medicine and Rehabilitation program. Expansion of that program will include increased services for lameness evaluation and diagnostic imaging as well as providing advanced rehabilitation services such as underwater treadmill, therapeutic laser, pulsed electromagnetic field (PEMF), acupuncture, osteopathy, and chiropractic therapies. A farrier unit will also be included within the expansion and will allow for a team of veterinarians and farriers to work together in providing optimal hoof care for clients' horses. The EHSP Center of Excellence will also feature additional surgical bays allowing for multiple equine surgeries to be conducted simultaneously, which will be essential to support the expected growth. Separation of our critically ill population (for example, sick neonates, pregnant mares, and colic cases) will also allow for appropriate biosecurity while still providing intensive management within the intensive care unit (ICU) setting.



Standing CT scanner from ASTO CT\* allows for scanning of the limbs from the hoof to the carpus and tarsus and the head and neck (through the rotating scanner). Image on the right demonstrates a fracture (red circle) of the navicular bone found on 3-D reconstruction after standing CT imaging.



Underwater treadmill by Aqua Pacer allows for adjustment of the water level and water temperature to help rehabilitate horses after injury.  
<https://www.hudsonaquatic.com/products/equine/>



PET scanner developed by UC Davis. (a) scanner in use (b) PET Scan image (c) PET image overlaid on radiographs. Images from:  
<https://ceh.vetmed.ucdavis.edu/news/standing-equine-pet-now-clinical-use-uc-davis>

### 3.2.1: Translational Research: From the laboratory to the horse

The new equine hospital at LSU Vet Med will be distinguished from other veterinary teaching hospitals because it will be aligned and in close association with the Equine Health and Sports Performance Center of Excellence (EHSP Center of Excellence). The EHSP is a state-of-the-art biomedical translational research program that is dedicated to the health, well-being, and performance of horses through veterinary research. The EHSP's primary goal is to bring biomedical research from the laboratory directly to the horse. The program is funded by a statutory dedication from the Louisiana State Legislature and has recurred yearly since 2005. The investigators within the EHSP are equine clinician-scientists with diverse research interests. Examples of translational research include laboratory testing of pharmaceutical agents developed by industry and evaluating them in horses with specific diseases to test efficacy of those agents. These studies have resulted in the approval of these agents by the Center of Veterinary Medicine, a branch of the federal Food and Drug Administration (FDA).

**Translational pharmacologic and supplement research; testing efficacy for these agents on horses with diseases.**

Pharmacologic Agent (Generic)	Disease in Horses	Brand Name	FDA: Year Approved	Company
Pergolide	Pituitary Pars Intermedia Dysfunction	Prascend®	2011	Boehringer-Ingelheim Vetmedica, Inc.
Ciclesonide	Asthma	Aservo® Equihaler®	2020	Boehringer-Ingelheim Vetmedica, Inc.
Omeprazole	Gastric Ulcers	Zengard	In progress	Randlab, Pty.
Hyaluronic Acid	Osteoarthritis	TBD	In progress	Dechra, Inc.
Curcumin	Osteoarthritis	Longvida®	NA, Supplement, 2022	W.F. Young, Inc.
Calmin Calcium	Gastric Ulcers	Outlast®	NA, Supplement, 2017	Purina Animal Health

Ongoing Research (Andrews’ Lab):

Andrews, F.M., Riggs, L.M., Chapman, A.M. Mild/Moderate Asthma Study 2022. Sponsored by Hilltop BioScience, Inc., Private, September 1, 2022-December 31, 2023.

Andrews, F.M., Chapman, A.M., Balasuriya, U. EHV-1 Specific Immune responses to EHV Vaccines in horses. Boehringer-Ingelheim Animal Health, Private. January 2021-December 2024.

Andrews, F. M., Chapman, A., Gray, L. “Effects of a Supplement Containing Siberian Ginseng on Health and Behavior in Horses.” Sponsored by SmartPak, LLC. Private, September 1, 2021 – January 31, 2022.

The Leise lab within the EHSP Program focuses on various inflammatory conditions in the horse, particularly sepsis and laminitis. The laboratory is working to develop better diagnostics and test novel therapeutics to improve outcomes in sick horses and prevent the occurrence of lameness associated with these conditions. Other inflammatory conditions such as wound/incisional healing and osteoarthritis are also studied in the Leise Lab with approaches to test therapies, such as stem cells and platelet-rich plasma, for improved clinical outcomes. The Leise Lab takes a translational approach to research and works with collaborators from within the EHSP Center of Excellence, LSU Vet Med, and LSU Health Sciences Center, as well as other universities, nationally and internationally. Additional collaborative work with Dr. Colin Mitchell includes studies involving the pharmacological use and metabolism of bisphosphonates in the thoroughbred and quarter horse and with Dr. Jeannette Cremer evaluating mediators of pain and assessing potential therapeutics in the horse.

The Riggs lab within the EHSP Program focuses on the treatment and prevention of musculoskeletal diseases and injuries with a particular focus on promoting the health of the equine athlete. A major aim of the Riggs Lab is the development and testing of orthopedic implants for fracture repair in the horse. Another area of interest is the evaluation of regenerative therapeutics for degenerative musculoskeletal conditions. The Riggs Lab works with collaborators from within the EHSP Center of Excellence and LSU Vet Med, as well as other universities and private orthopedic developers, to advance the options available to equine orthopedic patients.

### 3.2.2: Laboratory of Comparative Orthopedic Research (LECOR)

In addition to translational research in the areas of gastrointestinal, respiratory and osteoarthritis in horses, the Laboratory of Comparative Orthopedic Research (LECOR) continues work in the area of stem cells and regenerative medicine. Dr. Mandi Lopez, director of LECOR, and her team continue to isolate stem cells from horses and evaluate improving tendon healing in horses with tendonitis and osteoarthritis.

Many other areas of translational research are being performed and include fracture repair, cartilage repair, holistic medicine, osteopathy, integrative medicine and evaluating the safety of various medications.

### 3.3: Comparable Facilities

While the expanded facility will be state-of-the-art, it will not be the first of its kind. Across the country, other universities are already moving to upgrade to modern equine facilities. These facilities cover a wide range of cost and size but provide many of the same services such as emergency care, ophthalmology, sports medicine, lameness evaluation, and more. Below is a table that compares the projected EHSP Center of Excellence to a group of existing facilities in terms of cost and size.

School	Name	Cost (in Millions)	Size (sq ft)
Louisiana State University	<b>EHSP Center of Excellence</b>	<b>50.7</b>	<b>115,151</b>
Ohio State University	Ralph Rogan Equine Performance Evaluation	39	12,000
Colorado State University*	Johnson Family Equine Hospital	60	180,000
Colorado State University	New Fort Collins Facility	230	300,000
North Carolina State University		70	103,600
University of Georgia	UGA Veterinary Teaching Hospital	28	106,138
University of Florida*	UF Veterinary Hospital at World Equestrian Center	—	40,000
Texas A&M	Hildebrand Equine Complex	32	258,000
	Average	73	139,361
	Median	50.7	110,645

LSU Vet Med provides vital care to support a vibrant horse industry in Louisiana.

An expansion of the LSU EHSP Center of Excellence is crucial to keeping pace with the state’s equine needs and with LSU Vet Med’s peers.

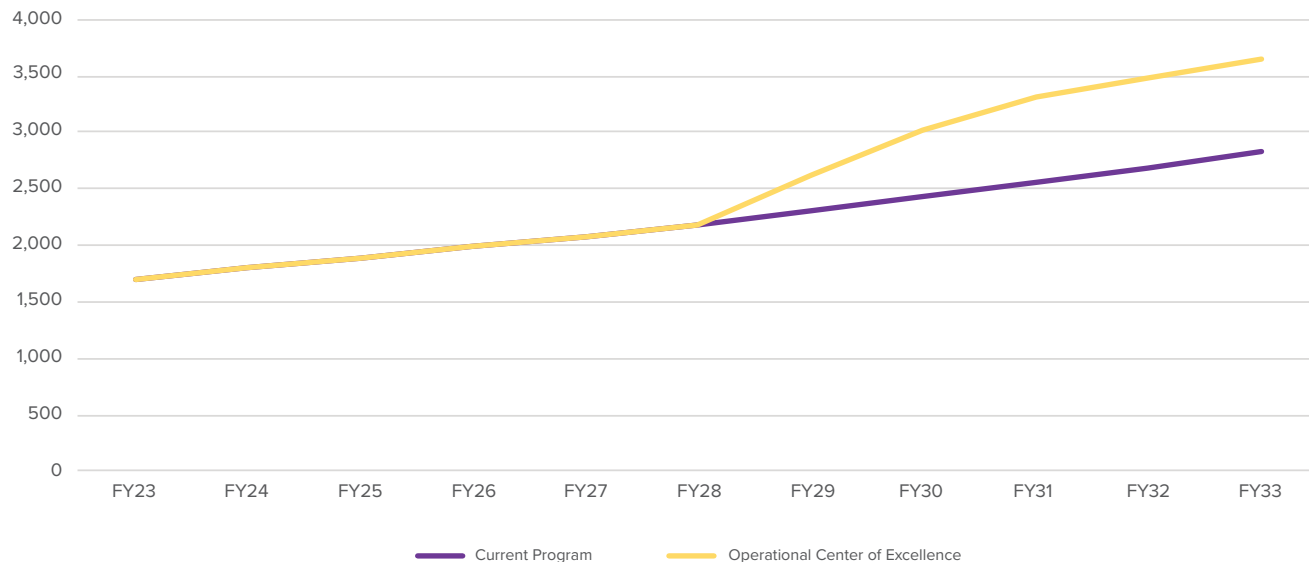
\*These universities have multiple equine facilities.

### 3.4: Measuring the Effect of the EHSP Center of Excellence

In FY 2023, the current EHSP program had a caseload of 1,687 horses and saw a revenue of \$2.25 million from the program's operations. The current program has seen an average annual growth rate of about 5% for both caseload and revenue. Using this growth rate, the current program will have an estimated caseload of 2,827 horses and could see revenue of approximately \$4.7 million in FY 2033.

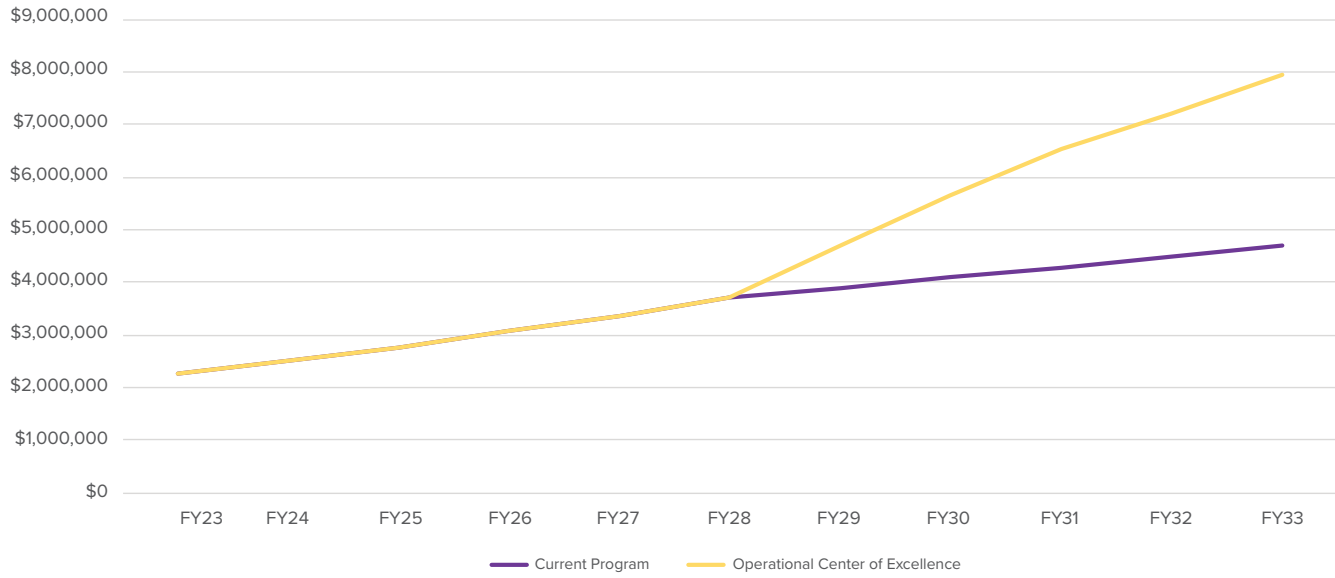
The EHSP Center of Excellence is scheduled to be fully operational by FY 2029. The new center's caseload is projected to grow by 20% in the first year of operation, leading to an estimated caseload of 2,621 horses in FY 2029. The following year, the projected caseload will increase by an additional 15%, then an additional 10% the following year, before returning to the 5.0% annual growth rate it currently sees. This leads to an estimated caseload of 3,655 horses in FY 2033. In the aggregate, the new center has the capacity to help an additional 13.5%, or 3,302, more horses from FY 2023- FY 2033 than under the current EHSP program.

#### Projected Caseload of Current Program and Center of Excellence



Upon completion and full operation of the new center, with a larger caseload capacity of an additional 20%, the projected revenues of FY 2029 are estimated to be \$4.7 million. Using the growth rate that is in line with caseload, the projected revenues of the center in FY 2033 would be \$7.9 million.

## Projected Revenues of Current Program and Operational Center of Excellence



While it is difficult to believe that the expanded and upgraded facility will not generate additional demand for services, revenues continue to cover costs (excluding utilities) even if revenues continue to rise at the current rates.

## 4 | Measuring Economic Impact of the EHSP Center of Excellence

To conduct this analysis, we consider three separate impacts: the impact of the current EHSP program, the impact of the major construction project to build the new center, and the estimated impact the fully operational center will have on the Louisiana economy. To measure these impacts, we use an input-output to show how revenues and expenditures from the EHSP program affect the Louisiana economy. When determining the overall impact, multiple rounds of spending need to be measured. For example, spending by the EHSP will create wages for employees, who then spend at Louisiana merchants who pay their employees and vendors. Those employees and vendors in turn create additional rounds of spending. Input-output analysis allows us to include multiple rounds of spending in our computations.

### 4.1: Economic Impact of the Current EHSP program

In FY 2023, the current EHSP program saw a direct economic output of over \$2.0 million, \$1.44 million in direct earnings, and directly supported 29 jobs. The operations of the EHSP program were also responsible for an additional \$1.36 million in indirect output, \$400,000 in indirect earnings, and an additional 8 indirect jobs. Thus, the total economic impact of the current EHSP program in FY 2023 was about \$3.6 million, about \$1.86 million in total earnings, and accounted for 37 jobs. Appendix 4 contains detailed information about the breeds of horses treated at EHSP.

#### Current Economic Impact of the EHSP

	Output	Earnings	Jobs
Direct	\$2.3	\$1.4	29
Indirect	\$1.4	\$0.4	8
<b>Total</b>	<b>\$3.6</b>	<b>\$1.9</b>	<b>37</b>

Note: Output and Earnings in \$millions.

Source: Implan and author's computations.

### 4.2: Economic Impact of Construction of the EHSP Center of Excellence

The new center will cost \$50.7 million to construct. Details of these construction costs are contained in Appendix 1. In terms of economic impact, constructing the new facility will create \$88.4 million in Louisiana output, \$36.2 million in earnings, and 598 jobs in the state.

#### Economic Impact of the Center of Excellence

	Output	Earnings	Jobs
Direct	\$50.7	\$25.1	400
Indirect	\$37.7	\$11.1	197
<b>Total</b>	<b>\$88.4</b>	<b>\$36.2</b>	<b>598</b>

Note: Output and Earnings in \$millions.

Source: Implan and author's computations.

### 4.3: Economic Impact of Operations of EHSP Center of Excellence

FY 2029 is the estimated first year of operations for the new Equine Health and Sports Performance Center of Excellence. Again, using the same input-output model, in FY 2029, the new center is projected to support a total economic output of \$7.5 million, support total earnings of \$3.0 million, and 75 total jobs. Of the total economic impact, the center would be directly responsible for \$4.0 million in output, direct earnings of \$3.0 million, and directly support 59 jobs.

#### Projected Economic Impact of the Expanded EHSP Center of Excellence

	Output	Earnings	Jobs
Direct	\$4.7	\$3.0	59
Indirect	\$2.8	\$0.9	16
<b>Total</b>	<b>\$7.5</b>	<b>\$3.9</b>	<b>75</b>

Note: Output and Earnings in \$millions.

Source: Implan and author's computations.

### 4.4: Projected Growth of Economic Outputs

Using a linear growth model that follows the growth of projected revenues of the new center from FY 2029-2033, we estimate the projected total economic output and direct economic output of the EHSP Center of Excellence. In FY 2033, we project that the center will be responsible for a total output of \$12.72 million and a direct economic output of \$7.94 million. From FY 2029-2033, the aggregated total economic output of the EHSP Center of Excellence would be \$51.3 million.

#### Projected Annual Economic Impact of the EHSP Center of Excellence





## 5 | Conclusion

---

As of 2021, Louisiana is home to over 71,000 horses. Whether used for racing, recreation, or shows, these horses have a significant monetary value and generate significant economic impact. To support the horses, veterinary medical facilities are required to keep them at their healthiest. These facilities generate even more economic impact to support Louisiana. The Equine Health and Sports Performance Center of Excellence is one of these important facilities.

In FY 2023 the EHSP was responsible for total economic impact of \$3.6 million, \$1.86 million in total earnings, and accounted for 37 jobs. Under the proposed expansion, the EHSP will be able to provide medical care for more horses and make a greater economic impact. Projections for this new facility, slated to open in FY 2029, total an economic output of \$7.5 million, and support \$3.86 million in earnings and 75 jobs. From FY 2029-2033, the center will be responsible for an aggregated total of \$51 million in economic output in Louisiana.

## References

American Horse Council, (2005), "Most Comprehensive Horse Study Ever Reveals a Nearly \$40 Billion Impact on the U.S. Economy."

Einav, L., Finkelstein, A., & Gupta, A. (2017). Is American Pet Healthcare (also) Uniquely Inefficient? *American Economic Review*, 107(5), 491-495.

Guidry, Kurt and Tobie M. Blanchard (2021), 2020 Louisiana Summary: Agriculture and Natural Resources, <https://www.lsuagcenter.com/articles/page1677766893201>.

The Jockey Club (2023), "2023 Louisiana State Fact Book: A Statistical Guide to the Thoroughbred Industry in Louisiana."

Terrell, Dek (2016), Lewis, Terrell, and Associates, "The Economic Impact of Horse Racing in Louisiana."

# Appendix 1:

## Equine Health and Sports Performance Center of Excellence Projected Cost of Construction

### LSU SVM Equine Sports and Performance Center



Item	Description	Estimated Quantity	Unit Cost	Probable Cost
<b>LSU SVM</b>				
<b>Demolition</b>				
	General Site Demolition	1 ls	\$30,000.00	\$30,000.00
	<b>Demolition Total</b>			<b>\$30,000.00</b>
<b>Site and Infrastructure</b>				
	General Site Infrastructure and Grading Prep	1 ls	\$350,000.00	\$350,000.00
	Site Utilities and Drainage	1 ls	\$650,000.00	\$650,000.00
	<b>Site Total</b>			<b>\$1,000,000.00</b>
<b>Equine Health and Sports Performance</b>				
	Lameness / Outpatient Ward	3950 sf	\$225.00	\$888,750.00
	Lameness / Outpatient - Outdoor	550 sf	\$125.00	\$68,750.00
	Equine Medical Ward	3900 sf	\$225.00	\$877,500.00
	Equine Medical -Outdoor	400 sf	\$125.00	\$50,000.00
	Surgery Ward 1	4,191 sf	\$225.00	\$942,975.00
	Surgery Ward 1-Outdoor	400 sf	\$125.00	\$50,000.00
	Surgery Ward 2	4,191 sf	\$225.00	\$942,975.00
	Surgery Ward 2-Outdoor	400 sf	\$125.00	\$50,000.00
	Sports Medicine Ward	3,959 sf	\$225.00	\$890,775.00
	Sports Medicine-Outdoor	400 sf	\$125.00	\$50,000.00
	Radiology Ward	5,300 sf	\$350.00	\$1,855,000.00
	Radiology-Outdoor	1,500 sf	\$125.00	\$187,500.00
	ICU : Colic Ward -Conditioned	5,976 sf	\$300.00	\$1,792,800.00
	ICU : Colic Ward- Covered Feeding	3,126 sf	\$125.00	\$390,750.00
	ICU : Non-Colic Ward -Conditioned	5,976 sf	\$300.00	\$1,792,800.00
	ICU : Non-Colic Ward- Covered Feeding	3,126 sf	\$125.00	\$390,750.00
	Therio Ward: Conditioned	1,380 sf	\$300.00	\$414,000.00

Therio Ward: Stalls	2,094	sf	\$225.00	\$471,150.00
Administration / Public	3,595	sf	\$350.00	\$1,258,250.00
General Exam Rooms	1,134	sf	\$325.00	\$368,550.00
Operating Ward	7,425	sf	\$400.00	\$2,970,000.00
Administration/ Rounds/ Faculty Support	12,478	sf	\$300.00	\$3,743,400.00
Circulation	15,100	sf	\$90.00	\$1,359,000.00
<b>Equine Construction</b>	<b>90551</b>	<b>sf</b>		<b>\$21,805,675.00</b>
<b>Equine Hydrotherapy</b>				
Hydrotherapy Pool	1	ls	\$250,000.00	\$250,000.00
Hydrotherapy Pavilion	8,000	sf	\$350.00	\$2,800,000.00
<b>Hydrotherapy Total</b>				<b>\$3,050,000.00</b>
<b>Lameness/Farrier</b>				
Lameness Pavilion	12,600	sf	\$185.00	\$2,331,000.00
Farrier Unit (included with Sports Med)	4,000	sf	\$0.00	\$0.00
<b>Lameness Total</b>				<b>\$2,331,000.00</b>
<b>Physical Plant Upgrades</b>				
Physical Plant for Equine Support	1	ls	\$2,500,000.00	\$2,500,000.00
<b>Physical Plant Total</b>				<b>\$2,500,000.00</b>
<b>Construction Total Base Bid</b>				<b>\$30,716,675.00</b>
<b>Subtotal</b>				<b>\$30,716,675.00</b>
G.C. Contract Conditions	18	mths	\$20,000.00	\$360,000.00
General Contractor OH & P	10%			\$3,071,667.50
Insurance	2%			\$614,333.50
Construction Contingency	10%			\$3,071,667.50
Furniture Equipment	1%	ls		\$8,000,000.00
Inflation (@ 4 years)	4%	yr	16%	\$4,914,668.00
<b>Probable Construction Cost Allowance</b>				<b>\$50,749,011.50</b>

## Appendix 2:

### Show Facilities

#### Louisiana Equestrian Tourism : Show Facilities

##### Sportman's Paradise

Name	Address	Phone	Email	Website
Collins Horsemanship	782 Rock Corner Rd, Dubach, LA, 71235	(318) 255-6871		www.collinsnaturalhorsemanship.com
Crooked Creek Farm Riding School	3994 Hwy 151 Downsville, LA 71234	(318) 982-7429		
Double Rainbow Farms	1860 Adner Rd Houghton, LA 71037	(817) 845-1439	DblRainboF@yahoo.com	www.doublerrainbowfarm.org
Harras's Louisiana Downs Casino and Racetrack	8000 E Texas St, Bossier City, LA 71111	(318) 742-5555		www.caesars.com/harrahs-louisiana-downs
Houghton Riding Club Arena	314 W McKinley, Houghton, LA 71037		amandacrusenails@aol.com	
Hidden Hollow Miniature Horse	310 Rolling Meadow Ln, Bossier City, LA 71112	(318) 746-2784		
Ike Hamilton Exposition Center	501 Mane St, West Monroe, LA 71292	(318) 325-9160		www.westmonroe.com
Mark Wilcher Reining Horses	2087 LA-854, Rayville, LA 71269	(318) 376-4549	thespinmaster50@gmail.com	www.wilcherreining.net
Monroe Civic Center Pavilion	401 Lea Joyner Expy, Monroe, LA 71201	(318) 329-2225		www.monroela.us
Morehouse Activity Center	9525 Marlatt St, Bastrop, LA 71220	(318) 355-5675		www.morehouseactivitycenter.com
North LA Expo Center	165 Fairgrounds Rd, Ruston, LA 71270	(574) 229-9973	mark@mcdiamond.com	www.nlec.lincolnparrish.org
North Louisiana Exhibition Center	165 Fairgrounds Rd, Ruston, LA 71270	(318) 254-8877		www.nlec.lincolnparrish.org
West Cal Arena & Events Center	401 Arena Rd, Sulphur, LA 70665	(337) 528-9378	amoreno@westcalevents.com	www.westcalevents.com

##### Crossroads

Name	Address	Phone	Email	Website
A and A Farms	416 New Roads Rd, Natchitoches, LA 71457	(318) 332-0055	aafarmsllc@yahoo.com	www.louisianahorseplay.com
Beauregard Parish Covered Arena	5515 Hwy 190, West DeRidder, LA 70634	(337) 463-5090		www.bparena.net
C-Bar Covered Arena	262 C Bar Ranch Rd, Jonesville, LA	(601) 807-7826		
C. Woodrow DeWitt Sr. Livestock Complex	100 Gregg Marshall Dr, Alexandria, LA 71302	(318) 473-6528		
Chauncey Pitre Memorial Bldg	1204 Chauncey Pitre Rd, Ville Platte, LA 70586	(337) 363-5646		
Rapides Parish Coliseum	Coliseum Blvd, Alexandria LA 71303	(318) 442-9581		
T & M Lazy T. Arena	4354 Hwy 84, Jonesville, LA		tmlazyt@gmail.com	
Vernon Parish Arena	276 H. M. Stevens Blvd, Leesville, LA 71446	(337) 238-0324	arena@vernonparishpolicejury.com	www.vppjla.com/?page_id=142

##### Cajun Country

Name	Address	Phone	Email	Website
Acadia Rice Arena	159 Cherokee Dr, Crowley, LA 70526	(337) 783-1442		www.appj.org/DEPTrice.html
Assumption Parish Agricultural Complex and Arena	PO Box 520, Napoleonville, LA 70390	(985) 369-7435		www.assumptionla.com/agcomplex
Blackham Coliseum	444 Cajundome Blvd, Lafayette, LA 70506	(337) 482-6441		
Burton Coliseum Agricultural Arena	7001 Gulf Hwy, Lake Charles, LA 70607	(337) 721-4090		www.burtoncomplexevents.com

Cajundome	444 Cajundome Blvd, Lafayette, LA 70506	(337) 265-2100	pdeville@cajundome.com	www.cajundome.com
Cambridge Stables	7859 Hwy 92, Maurice, LA 70555	(337) 207-7911		www.cambridgestables.com
Cedar Lane Farm Dressage Facility	510 Judson Walsh Dr, Opelousas, LA 70570	(337) 948-7719	lauraryan455@gmail.com	
Cherokee Ridge Horse Farm	200 Flying W Dr, Carencro, LA 70502	(337) 280-1535	info@cherokeeridgehorsefarm.com	www.cherokeeridgehorsefarm.com
David McCoy Stables	1128 Birdnest Rd, Lake Charles, LA 70611	(337) 304-2199	mchollins@msn.com	
Delta Downs Racetrack Casino and Hotel	2717 Delta Downs Dr, Vinton, LA 70668	(800) 589-7441		www.deltadownsracing.com
Evangeline Downs Racetrack & Casino	2235 Cresswell Ln Ext, Opelousas, LA 70570	(866) 472-2466		www.evangelinedowns.com
Evangeline Training Center	3620 NE Evangeline Thwy, Carencro, LA	(337) 896-4268	rachelle@evangelinettrainingcenter.com	
Joie de Vivre Farm	100 Equestrian Ln, Youngsville, LA 70592	(337) 303-5344	michelledaustin@yahoo.com	www.joiedevivrefarm.com
Longhorn Equine Training Center	2374 Hwy 109 S, Vinton, LA	(409) 313-3745	schlesinger.letc@gmail.com	www.TexasLonghornComplex.com
Pharview Stables	467 Halfway House Rd, Arnaudville, LA 70512	(337) 298-1072	nicole@pharviewstables.com	www.pharviewstables.com
Sugarena	713 NW Bypass (Hwy 3212), New Iberia, LA 70560	(337) 256-8681	info@sugarena.com	www.sugarena.com
The Stables at Le Bocage	4550 S Park Dr, Lake Charles, LA 70607	(337) 905-5967	info@lebocagestables.com	www.thestablesatlebocage.com
Willow Oaks Equestrian Center	3036 S Fieldspan Rd, Duson, LA	(337) 981-3499	willowoaksseq@gmail.com	www.willowoaksequestrian.com
Woodland Hills Equestrian Center	110 Blue Ridge Dr, Carencro, LA 70520	(337) 886-8753	woodlandhills01@mac.com	www.woodlandhillsequestriancenter.com

## Plantation Country

Name	Address	Phone	Email	Website
Brec Farr Park Horse Activity Center	6400 River Rd, Baton Rouge, LA 70895	(225) 769-7805		
C. M. "Mike" Zito Multi-Purpose Center	61755 Bayou Rd, Plaquemine, LA 70764	(225) 659-7579		
Clinton Covered Arena	14730 Hwy 10, Clinton, LA	(225) 572-9229	clinton_arenahwy10@yahoo.com	www.clintonarena.com
Colonial Stables	38297 Cornerview Rd, Gonzales, LA 70737	(225) 647-3276	1crossranch@gmail.com	
Farr Park Equestrian Center	6402 River Rd, Baton Rouge, LA 70820	(225) 769-7805	info@brec.org	www.brec.org/index.cfm/park/FarrPark
Florida Parishes Arena	1301 NW Central Ave, Amite, LA	(985) 748-5914		
Lamar Dixon Expo Center	9039 S St Landry Ave, Gonzales, LA 70737	(225) 450-1009	KRogers@lamardixonexpoctr.com	www.lamardixonexpoctr.com
Louis Mouch Multi-Purpose Arena	152 Turner Rd, Port Allen, LA 70767	(225) 388-9125	jason.leblanc@wbrouncil.org	www.wbrouncil.org
Pointe Coupee Multi-Purpose Facility	1400 Major Pkwy, New Roads, LA	(225) 638-5548	weldonj@live.com	
River City Equestrian Center	16531 New Horizon Ln, Prairieville, LA 70769	(225) 677-9219		www.rivercityequestriancenter.com
West Baton Rouge Multi Purpose Arena	152 Turner Dr, Port Allen, LA 70767	(225) 388-9125		

## Greater New Orleans

Name	Address	Phone	Email	Website
Amen Corner Farm	27519 Polo Rd, Folsom, LA 70437	(985) 796-3712	amencornerfarm@hotmail.com	www.amencornerfarm.com
Equest Farm	1001 Filmore Ave, New Orleans, LA 70124	(504) 483-9398	info@equestfarm.com	www.equestfarm.com
Fair Grounds Race Course & Slots	1751 Gentilly Blvd, New Orleans, LA 70119	(504) 944-5515		www.fairgroundsracecourse.com
Lagniappe Equestrian Center	13349 Verger Rd, Folsom, LA 70437	(985) 796-9134	lagniappefarm@bellsouth.net	www.lagniappeequestriancenter.com
Sambola Show Stables, LLC	80 Dewberry Rd, Covington, LA 70435	(985) 966-0732		http://www.sambolashowstables.com
Smoothie King Center	PO Box 52439, New Orleans, LA 70152	(504) 587-3663		www.smoothiekingcenter.com

# Appendix 3:

## Associations

### Louisiana Equestrian Tourism Organizations

#### Sportman's Paradise

Name	Address	Phone	Email	Website
Louisiana High School Rodeo Association		(337) 540-4623		www.rodeosportsnetwork.com/lhsra.aspx
Western Louisiana Barrel Racers Association		(318) 495-2352	wlbra@yahoo.com	
North Louisiana Equestrian Association		(318) 747-6744	info@nlea.org	www.nlea.org

#### Crossroads

Name	Address	Phone	Email	Website
The Louisiana Quarter Horse Breeders Association	PO Box 12300, Alexandria, LA 71315	(318) 487-9506	tpatterson@lqhba.com	www.lqhba.com

#### Cajun Country

Name	Address	Phone	Email	Website
Acadiana Barrel Racing Association		(337) 288-5374	info@laabra.com	www.laabra.com
Acadiana Fairgrounds Commission	713 NW Bypass Hwy, New Iberia, LA 70560	(337) 365-7539	info@sugarena.com	www.sugarena.com
Acadiana Therapeutic Riding Organization	PO Box 763, Carencro, LA 705208	(337) 280-8788	tsellers777@mail.com	www.acadianatherapeuticriding.org
Deep South Cutting	3402 Captain Cade Rd, Broussard, LA 70518-08222	(337) 369-9645		
Hub City Hunter Jumper Association	100 Equestrian Ln, Youngsville, LA 70592		hubcityhunterjumper@gmail.com	www.hchja.com
Iberia Parish CVB	2513 LA-14, New Iberia, LA 70560	(337) 365-1540		www.iberiatravel.com
Knollwood Farm	145 Knoll Wood Lane, Sunset, LA 70584	(337) 662-5161	hollymacle@gmail.com	knollwoodequestriancenter.com
Lafayette Convention & Visitors Commission		(800) 346-1958	ben@lafayettetravel.com	www.lafayettetravel.com
Louisiana Equine Council	1105 West Port St, Abbeville, LA 70510	(337) 296-6819		www.laequinecouncil.com
Louisiana Reining Horse Association	PO Box 291, Des Allemands LA 70030			www.thelrha.com
Louisiana Stock Horse Association		(337) 344-9125	Jgauth3522@aol.com	www.louisianastockhorse.com
Gauthiers' RV Center	124 N Ambassador Caffery Pkwy, Scott, LA 70583	(337) 221-0559	Jim@gauthiersrv.com	

#### Plantation Country

Name	Address	Phone	Email	Website
4-H	171 Knapp Hall, Baton Rouge, LA 70803	(225) 578-2971	JFox@agcenter.lsu.edu	www.lsuagcenter.com/topics/kids_teens
Baton Rouge Barrels			BatonRougeBarrelRacing@yahoo.com	www.brbra.com
Browning Quarter Horses	8100 Hwy 963, Ethel, LA 70730	(225) 683-3627	mba@browningquarterhorses.com	www.browningquarterhorses.com

FFA	110 LSU Union Square, Baton Rouge, LA 70803	(225) 578-5749	kcornerly@agcenter.lsu.edu	www.la-ffa.org
Louisiana Arabian Horse Association		(985) 859-5144	MPHimmel@bellsouth.net	www.laarabians.org/index.html
Louisiana Veterinary Medical Association		(225) 928-5862	office@lvma.org	www.lvma.org
Seafood Promotions Board	1051 N Third St, 3rd floor, Baton Rouge, LA 70802	(225) 342-0552		
South Louisiana Team Sorting Association			stevena1008@gmail.com	www.sltsa.com/home
Southern Louisiana Hunter Jumper Association				http://www.slhja.com
Livingston Show Horse Association	7600 Vincent Rd, Denham Springs, LA 70726	(225) 664-3150	livingstonhorseshow@yahoo.com	www.livingstonhorseshow.weebly.com

## Greater New Orleans

Name	Address	Phone	Email	Website
Greater New Orleans Sports Foundation		(504) 525-5678	bferrante@gnosf.org	www.gnosports.com
Louisiana National Barrel Horse Association	9009 River Rd, Waggaman, LA 70094	(504) 431-2345	tanyascarpenter@att.net	www.nbha.com
Louisiana Horse Rescue Association	PO Box 10204, New Orleans, LA 70181-0204	(318) 344-3732	admin@louisianahorserescue.com	www.louisianahorserescue.com
Louisiana Horsemen's Benevolent & Protective Association		(504) 945-1555	arthurmorrell@yahoo.com	www.ahbpa.org
Louisiana Quarter Horse Association		(504) 881-9385	lqha@hughes.net	www.lqha.com
Louisiana Racing Commission	320 N Carrollton Ave, Suite 2-B, New Orleans, LA 70119	(504) 483-4000	llandry@lrc.state.la.us	horseracing.louisiana.gov/index.html
New Orleans Convention and Visitors Bureau	2020 St. Charles Ave, New Orleans, LA 70130	(504) 566-5011		www.neworleanscvb.com
New Orleans Polo Club	PO Box 1202, Folsom LA 70437	(985) 869-3181	neworleanspoloclub@gmail.com	www.neworleanspoloclub.com
New Orleans Tourism Marketing Corp	2020 St. Charles Ave, New Orleans, LA 70130	(504) 410-2396		www.neworleansonline.com/notmc/aboutus.html
Royal Carriages	700 Decatur St, New Orleans, LA 70116	(504) 943-8820	info@neworleanscarriages.com	www.neworleanscarriages.com
Southern Eventing & Dressage Association		(504) 495-5242	Membership@sedariders.org	www.sedariders.org

## Appendix 4:

### Horse Breeds Seen in the Last Two Years

Breedname	TransactionTxn Date					
	FY 2019	FY 2020	FY 2021	FY 2022	FY 2023	FY 2024
American Paint Horse	74	51	69	80	87	11
American Saddlebred	8	15	30	43	22	1
American Warmblood	1	13	7	1	4	
Andalusian			3	4		
Anglo-Arab				2	3	
Appaloosa	9	8	13	20	24	1
Appaloosa Cross	15	3	4	3	2	
Appendix	34	21	23	32	18	1
Arabian	43	58	49	73	83	5
Arabian Cross	12	13	16	14	16	1
Belgian		1	4	1		
Canadian Sport Horse		2				
Clydesdale		3	4	9	4	
Connemara			4		3	4
Dartmoor Pony			6	2	2	
Donkey	3	2	10	12	7	3
Donkey, Miniature	2	1	4	2	3	3
Draft Horse	2	1	23	19	16	4
Drum Horse		2				
Dutch Warmblood	3	27	8	12	17	1
Friesian	6	4	17	9	10	3
Grade	4	6	1	3	1	
Gypsy Vanner	1		4	10	2	
Hackney Pony					4	
Haflinger		2	1	3		
Hanoverian	23	5	17	8	3	2
Holsteiner	6	9	8	27	28	2
Irish Draught		3				
Irish Sport Horse	8	2	12	18	10	4
Lipizzan	2					
Lusitano				1		



Breedname	TransactionTxn Date					
	FY 2019	FY 2020	FY 2021	FY 2022	FY 2023	FY 2024
Miniature Horse	26	22	31	36	38	5
Missouri Fox Trotter	8	4	3	7	4	3
Morgan	10	3	3	4	6	1
Mule	5	3	14	11	6	
Mustang	7	7	6	10	6	4
National Show Horse	18	18	18	21	10	
Oldenburg	14	12	6	4		
Other Equine	78	55	44	48	33	4
Paso Fino	3	5	12	7	10	
Percheron	16	14	30	15	13	6
Peruvian Paso	9	11	9	8	12	2
Pinto	9	4	5	1	3	1
Pony	14	29	29	21	24	1
Pony of America		3	5	2	2	1
Quarter Horse	789	706	753	862	793	131
Quarter Horse Cross	39	66	53	48	31	3
Rocky Mountain Horse	5	6	3		11	
Selle Francais	1	3	5	16	3	
Shetland Pony	4			1	2	
Shire	1		3	3	6	1
Standardbred	19	10	12	19	15	5
Standardbred Cross	2	1		2		
Suffolk Punch						1
Swedish Warmblood			6		3	
Tennessee Walking Horse	35	38	36	27	39	5
Thoroughbred	376	386	417	428	362	42
Thoroughbred Cross	12	19	22	32	12	4
Trakehner	13	7	17	3	3	2
Unknown		9	17	21	11	6
Warmblood	89	95	64	79	95	6
Welsh Pony and Cob	12	7	16	8	18	1
Westphalian			1	3	3	1
Zebra						1
<b>Grand Total</b>	<b>1870</b>	<b>1795</b>	<b>1977</b>	<b>2155</b>	<b>1943</b>	<b>283</b>







**LSU**

---

**School of  
Veterinary Medicine**